

The Distributive Property

Guided Practice

1. Find $9 \times 8\frac{2}{3}$ mentally. Show the steps you used. (Example 1)

Use the Distributive Property to rewrite each algebraic expression. (Example 2)

2. $3(x + 1) =$ _____

3. $5(x + 8) =$ _____

4. $4(x + 6) =$ _____

Show your work.

Factor each expression. (Examples 4 and 5)

5. $25 + 60 =$ _____

6. $4x + 40 =$ _____

7. **Financial Literacy** Six friends are going to the state fair. The cost of one admission is \$9.50, and the cost for one ride on the Ferris wheel is \$1.50. Write two equivalent expressions and then find the total cost. (Example 3)

Independent Practice

Find each product mentally. Show the steps you used. (Example 1)

1. $9 \times 44 =$ _____

2. $4 \times 5\frac{1}{8} =$ _____

3. $7 \times 3.8 =$ _____

Show your work.

Use the Distributive Property to rewrite each algebraic expression. (Example 2)

4. $8(x + 7) =$ _____

5. $6(11 + x) =$ _____

6. $8(x + 1) =$ _____

Factor each expression. (Examples 4 and 5)

8. $8 + 16 =$ _____

9. $54 + 24 =$ _____

10. $63 + 81 =$ _____

11. $11x + 55 =$ _____

12. $32 + 16x =$ _____

13. $77x + 21 =$ _____



Standardized Test Practice

18. Which of the following expressions is equivalent to $6x + 24$?

- (A) $3(x + 12)$ (B) $6(x - 4)$ (C) $6(x + 4)$ (D) $x(6 + 4)$

Use the Distributive Property to rewrite each algebraic expression.

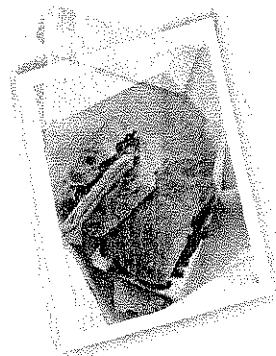
22. $4(x + 2) =$ _____

23. $3(x + 7) =$ _____

24. $5(2x + 7) =$ _____

25. **CCSS Be Precise** Mrs. Singh bought 9 folders and 9 notebooks. The cost of each folder was \$2.50. Each notebook cost \$4. Write two equivalent expressions and then find the total cost.

26. **CCSS Be Precise** Five friends bought admission tickets to the museum and a box lunch. The cost of each admission ticket was \$11.75. Each box lunch cost \$5. Write two equivalent expressions and then find the total cost.



Factor each expression.

27. $27 + 12 =$ _____

28. $12 + 36 =$ _____

29. $16 + 20 =$ _____